

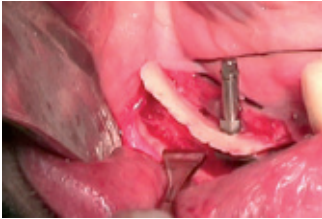


easy-graft®CRYSTAL

long-term volume preservation
soft from the syringe, moldable in the defect
hardens in contact with blood
100% synthetic bone graft substitute



easy-graft® CRYSTAL



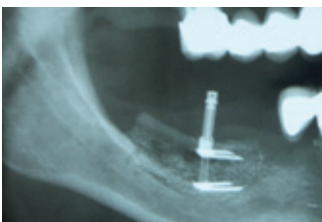
Step 1
Augmentation of the alveolar ridge with a mini-distractor



Step 2
Filling of the osteotomy gap



Step 3
The hardened bone graft substitute supports the lamella mechanically



Step 4
Radiological situation

Soft from the syringe - outstanding handling

easy-graft®CRYSTAL is moldable and can be applied directly from the syringe into the bone defect.

Hard in the defect

In contact with blood, *easy-graft®CRYSTAL* hardens within minutes into a stable scaffold of interconnected granules.

Membrane-free techniques

A membrane to retain the *easy-graft®CRYSTAL* scaffold in the defect is often not required, saving time and costs.

Space for regeneration

easy-graft®CRYSTAL features a total porosity of approximately 70%. Macropores provide space for vascularization and bone regeneration. The open micropores allow for optimal fluid circulation.

Integration into bone

easy-graft®CRYSTAL serves as an osteoconductive scaffold for bone deposition. *easy-graft®CRYSTAL* is partially resorbable. The hydroxyapatite portion remains embedded in bone for long-term volume preservation.

100% synthetic

easy-graft®CRYSTAL is fully synthetic and does not contain substances of animal or human origin.

Proven and tested biomaterials

easy-graft®CRYSTAL is composed of biphasic calcium phosphate (BCP), a compound of 60% hydroxyapatite and 40% β -tricalcium phosphate. The BCP granules are coated with a micrometer thin film of a biodegradable polymer.

Publications: Schmidlin et al. Clin Oral Implants Res (2011), Gacic B, et al. Oral Pathol Oral Radiol Endod (2009) 108(6): 844-50, Nair PN et al. J Biomater Appl (2006) 20(4): 307-24, Neumeyer S, et al. Die Quintessenz (2009) 60(8): 891-9, Thoma K et al. Oral Pathol Oral Radiol Endod (2006) 101(5): 558-64.

Product	<i>easy-graft®CRYSTAL</i>					
Reference no.	C15-012	C15-013	C15-072	C15-073	C15-002	C15-003
Units	3 x 0.15 ml	6 x 0.15 ml	3 x 0.25 ml	6 x 0.25 ml	3 x 0.4 ml	6 x 0.4 ml
Granule size	450–630 μ m	450–630 μ m	450–1'000 μ m	450–1'000 μ m	450–1'000 μ m	450–1'000 μ m
Material	Biphasic calcium phosphate (60% hydroxyapatite / 40% β -TCP)					



Manufacturer:



Degradable Solutions AG
A Company of the Sunstar Group
CH-8952 Schlieren / Zurich
www.easy-graft.com

Not for sale in the U.S.

C15-0001-EN-0000_01